

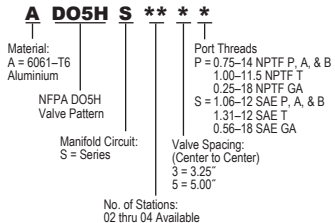
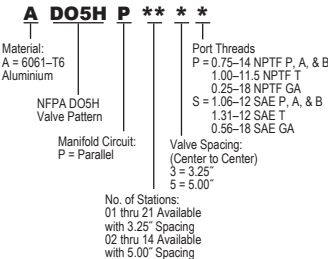
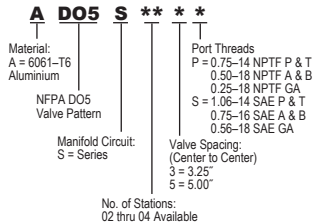
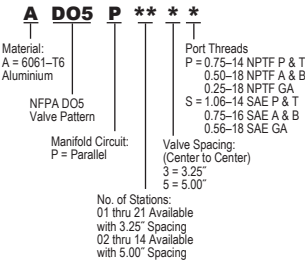
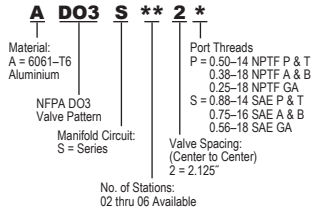
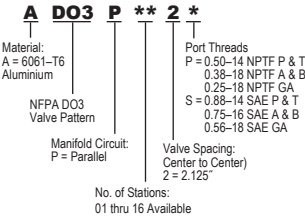
Aluminum Hydraulic Valve Manifolds

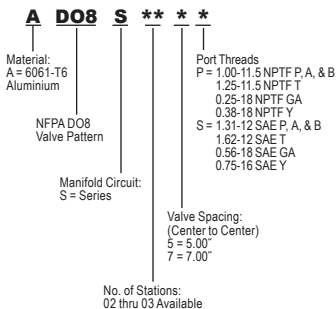
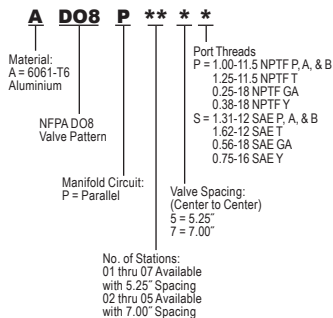
- 3000 PSI
- NFPA Valve Patterns
- Series or Parallel Circuit



OPTIONS...Contact your **Womack** office for ordering information on the following options: 5000 psi ductile iron; Relief valve cavities; Isolation plugs; BSPP, BSPT or metric threads; X, Y and L port connections; Custom manifolds with integrated circuits.

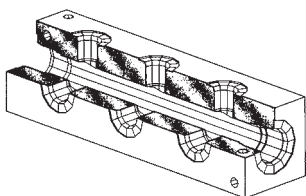
Ordering Information





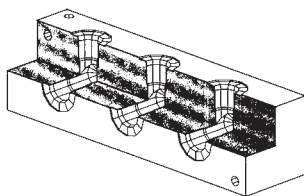
Headers and Junction Blocks

- 3000 PSI Aluminium Material
- 5000 PSI Ductile Iron (Optional)
- Surface or Wall Mount Standard



Header Block

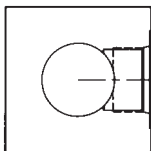
Daman's Header Block is designed to provide outlet ports that are common to one header (thru) port. The header port is always one size larger than the outlet ports.



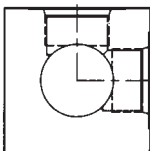
Junction Block

Daman's Junction Block is designed to provide a place to join piping and change direction or split/combine with other lines.

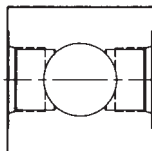
Available Header Block Configurations



AH000*****
0° Design

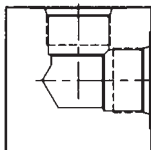


AH090*****
90° Design

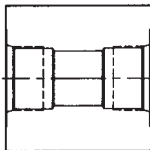


AH180*****
180° Design

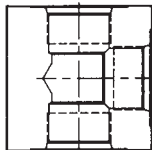
Available Junction Block Configurations



AJ090*****
90° Design



AJ180*****
180° Design



AJ270*****
270° Design

Ordering Information

<p>A</p> <p>Material: A = 6061-T6 Aluminium</p> <p>H = Header Block J = Junction Block</p> <p>Side Port Layout: 000 = Ports out one side only 090 = Ports out (2) adjacent sides 180 = Ports out (2) opposite sides 270 = Ports out (3) adjacent sides</p> <p>No. of Stations: 02, 03, 04, 06, 08 or 10</p>	<p>*</p> <p>***</p> <p>**</p> <p>***</p> <p>Side Port Threads: 01P = 0.062-27 NPTF side ports, 0.125-27 NPTF end ports 02P = 0.125-27 NPTF side ports, 0.250-18 NPTF end ports 04P = 0.250-18 NPTF side ports, 0.375-18 NPTF end ports 06P = 0.375-18 NPTF side ports, 0.500-14 NPTF end ports 08P = 0.500-14 NPTF side ports, 0.750-14 NPTF end ports 12P = 0.750-14 NPTF side ports, 1.000-11 NPTF end ports 16P = 1.000-11 NPTF side ports, 1.250-11 NPTF end ports 20P = 1.250-11 NPTF side ports, 1.500-11 NPTF end ports 24P = 1.500-11 NPTF side ports, 2.000-11 NPTF end ports 04S = #4 SAE side ports, #6 SAE end ports 06S = #6 SAE side ports, #8 SAE end ports 08S = #8 SAE side ports, #12 SAE end ports 12S = #12 SAE side ports, #16 SAE end ports 16S = #16 SAE side ports, #20 SAE end ports 20S = #20 SAE side ports, #24 SAE end ports 24S = #24 SAE side ports, #32 SAE end ports</p>
--	---

Additional Products from Daman

- Cover Plates
- Subplates
- Tapping Plates
- Valve Adapters
- Servo Valve Products
- DIN Cartridge Valve Bodies

Contact your nearest Womack sales office for additional information on Daman products.

- Custom Prototypes
- Repetitive
- Custom Manifolds
- All Major Cartridge Valve Tooling
- Up to 100mm DIN Cavities
- 4,000 lbs. Capability

